

The TekTouchPad is typically preconfigured for the customer, but can be easily modified by an installer. To modify the TekTouchPad download the User's Manual and software:

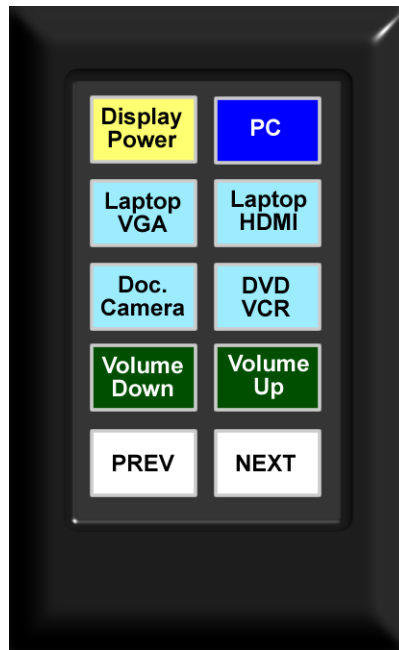
<http://www.tekvox.com/downloads/UM-TekTouchPadConfigurationUtility.pdf>

<http://www.tekvox.com/software/TekTouchPad.exe>

When the TekTouchPad is used with a TEK 1201 and TEK 2, it is possible to fully operate the system via the Touchscreen. This is made possible by sending Macro commands to the TEK 1201, which sends commands to the TEK 2 over the HDBaseT connection. The TekTouchPad has a logo page and up to four operational pages. Operational pages are only shown if there is a button labeled on that page.



**Logo Page**



**Page 1**



**Page 2**

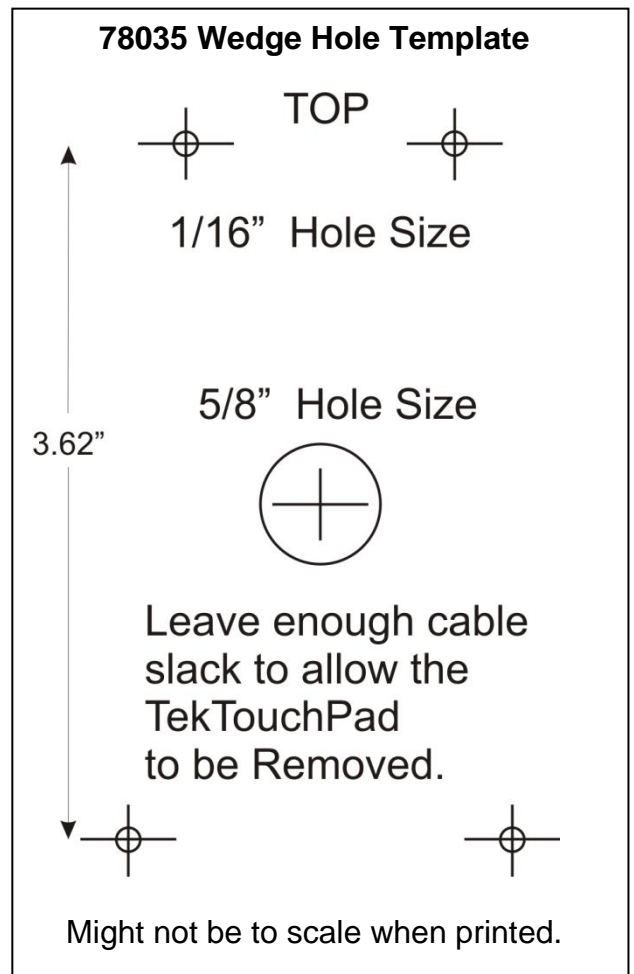
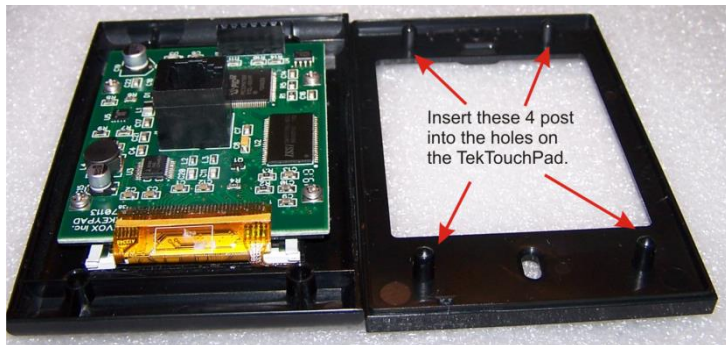
Supplied with the TekTouchPad and Wedge are the following:

- 1 TekTouchPad top assembly
- 1 TekTouchPad Sub base plate
- 1 80014 TekTouchPad Cable harness
- 1 12 volt AC wall adaptor
- 1 Wedge
- 4 #6 1/2" Wedge mounting screws
- 2 #6 Sub base mounting screws

When installing the Wedge, use the 4 supplied #6 screws. The wedge hole template below can be used as a drill guide. On the 80014 cable there are three breakout cables extruding from the DB-9 male connector. The RJ-12 cable is to be connected to the back of the TekTouchPad. Make certain you leave enough slack to remove the TekTouchPad once it is installed. Connect the female 2.1 mm power cable to the supplied 12 volt power supply. The other cable is a 3.5 mm mono connector that can be used with the old CMC-3 systems. Connect the DB-9 male to the supplied DB-9 female cable for the TEK 1201.

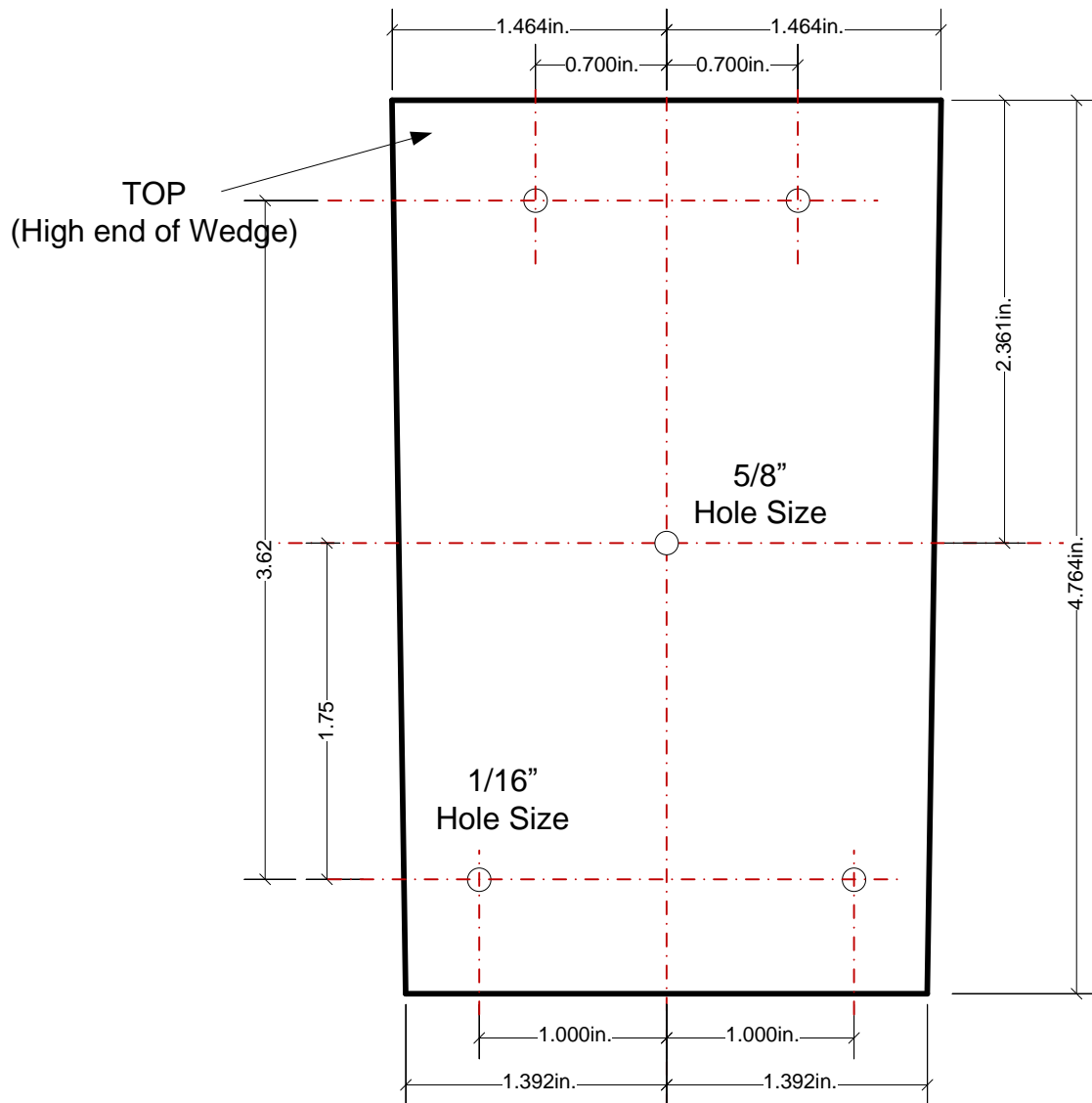
Once the wedge is installed, place the TekTouchPad Sub base on the wedge and use the two #6 chrome plated mounting screws to secure it. Insert the RJ-12 connector into the back of the TekTouchPad, if the power supply is connected, an LED on the circuit board will flash and the touchscreen will start to display a loading screen. Carefully press the TekTouchPad on to the Sub base, without pressing on the glass, until it is firmly inserted.

If touchscreen needs calibration, power cycle the unit while pressing center of screen. It is best to use a stylist or something like a small eraser to set calibration points.



# Podium Wedge Installation Template

Wedge part number: 78035



## Hole drilling instructions:

1. Place this template on the podium or surface where you would like to mount the Keypad Wedge.
2. Place the Wedge on top of the template and visualize its placement.
3. If you are sure of its placement, TAPE the template to the podium.
4. Drill four 1/16" holes through the template and into the podiums surface. About 1/2" deep.
5. Remove the template.
6. Place a provided No. 6, 1/2" long, phillips head screw in each of the four holes of the Wedge.
7. Screw to podium.